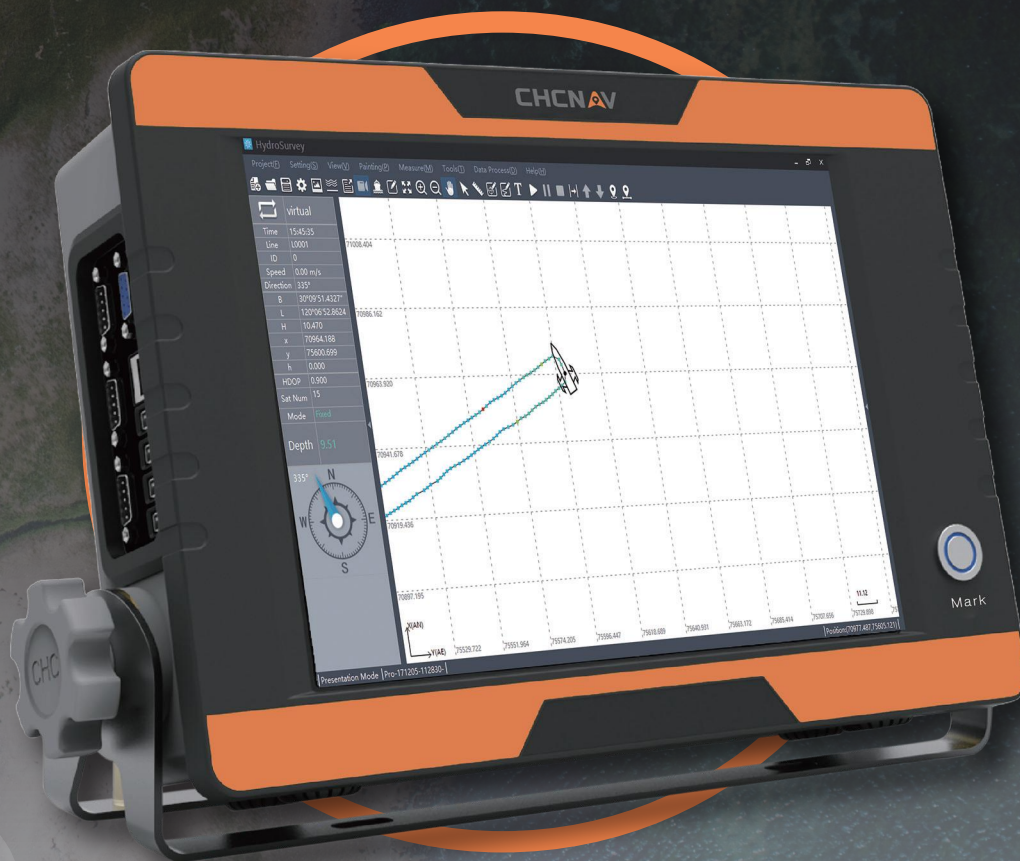


CHCNAV

D390

PORTABLE PROFESSIONAL HYDROGRAPHIC SYSTEM



MARINE CONSTRUCTION

D390 ECHO SOUNDER SINGLE FREQUENCY ALL-IN-ONE SYSTEM

The D390 is a cost-effective and rugged bathymetric solution that uses an advanced 200 kHz transducer to match different hydrographic conditions and significantly improve sounding performance and usability. The 7-degree beam angle provides focused directional and lateral resolution. In addition, the water depth recording frequency can be as high as 60 Hz. Using pulse width discrimination and automatic redundant data suppression enhance data accuracy and reliability.

Easy to operate with its feature-rich CHCNAV HydroSurvey software, the D390 clearly displays real-time depth readings and the survey project parameters on its 12-inch HD touch screen. The standard serial interfaces for motion sensors and GNSS differential receivers allow centimeter position precision.

TURNKEY HYDROGRAPHIC SOLUTION

Cut down mission mobilization cost by 20%

The D390 is a fully integrated and affordable single frequency echo sounder solution combined with the performance of an industrial PC. Light, portable and with a rugged IP66 aluminum alloy enclosure, the D390 is easy to set up and to deploy in any remote location. Its 12-inch touch screen display dramatically eases field survey operation making data always visible at a glance.

The D390 extended sounding capability (200 kHz and up to 500 W) output provides demanding professionals with the perfect solution to perform bathymetric survey in inland waterways, rivers, reservoir and coastal areas.

SIMPLIFIED SURVEY OPERATION

Fast learning curve

HydroSurvey7 manages your project within a single intuitive software from positioning and navigation to data acquisition and data processing and export in CSV format. Further data processing such as volume computation, contour lines are easily achieved with 3rd party bathymetric software to suit all your operational needs.

STANDARD DGNSS AND SENSORS INTERFACES

Full compatibility with NMEA data

The D390 is easy to pair with any GNSS RTK receiver outputting standard NMEA messages and offers enhanced compatibility with CHCNAV GNSS receivers. Your bathymetric surveys in shallow and medium depth water are achieved with high precision in real-time.

ULTRA-FAST STARTUP WITHOUT LAG TIME

Achieve maximum productivity and save survey time

The embedded Windows 10 operating system provides fast boot and total operation stability. The D390 allows you to start your survey rapidly, save time and enable you to achieve results faster. Survey data are secured on internal storage and always available to transfer on a USB flash disk for extreme convenience.

**AFFORDABLE
TURNKEY
ECHO SOUNDER**



Transducer



DGNS / RTK Input



Rugged aluminum enclosure

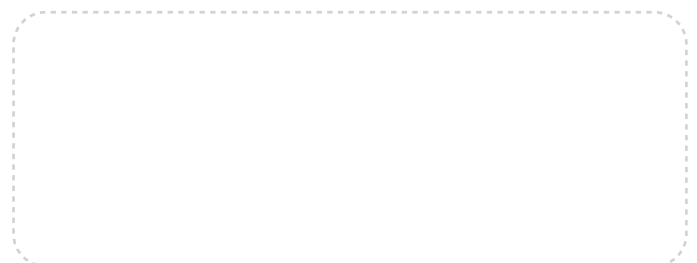
SPECIFICATIONS

Measurement Parameters	
Frequency	200 kHz
Output power	500 W RMS max
Depth range	0.15 m to 300 m
Accuracy	± 0.01 m + 0.1% of depth
Resolution	0.01 m
Sampling rate	Up to 60 Hz
Draft adjustment	0 m to 9.9 m
Sound velocity adjustment	1300 m/s to 1700 m/s
Data output	- User defined - CHCNAV - NMEA SDDPT/SDDBT - Original Waveform
Display	12-inch resistive touch screen
LCD resolution	HD 1024 × 768 pixels
Interface	- 2 × RS-232 serial ports - 2 × USB 3.0 ports - 2 × USB 2.0 ports
RAM	4 GB DDR 3L 1600 MHz
ROM	32 GB
CPU	1.6 GHz
Power consumption	25 W

Physical	
Size (L x W x H)	36.5 cm x 25.8 cm x 0.95 cm
Weight	4.7 kg
Pulse power	300 W
Input power	10 V DC to 30 V DC
Operating temperature	-30°C to +60°C (-22°F to +140°F)
Ingress protection	IP66



*Specifications are subject to change without notice.



© 2023 Shanghai Huace Navigation Technology Ltd. All rights reserved. The CHCNAV and CHCNAV logo are trademarks of Shanghai Huace Navigation Technology Limited. All other trademarks are the property of their respective owners. Revision December 2022.

WWW.CHCNAV.COM | MARKETING@CHCNAV.COM

CHC Navigation Headquarter
Shanghai Huace Navigation Technology Ltd.
577 Songying Road, Qingpu,
201703 Shanghai, China
+86 21 54260273

CHC Navigation Europe
Infopark Building, Sétány 1,
1117 Budapest, Hungary
+36 20 421 6430
Europe_office@chcnv.com

CHC Navigation USA LLC
6380 S. Valley View Blvd, Suite 246,
Las Vegas, NV 89118, USA
+1 702 405 6578

CHC Navigation India
409 Trade Center, Khokhra Circle,
Maninagar East, Ahmedabad,
Gujarat, India
+91 90 99 98 08 02